

# CMS v3.0 Central Monitoring System Installation Manual

---

# Contents

1、 System Requirements .....	
2、 Runtime Environment Settings .....	
3、 Install CMS 3.0 .....	
4、 Adjusting System .....	

---

# CMS 3.0 Installation Manual

## 1 、 Environment Requirements：

### 1.Hardware environments:

Processor : Pentium IV 1.8G or above  
Memory Mother board : 256MB or above  
Disk : Intel chipset recommended  
drive Monitor : 40GB or above  
Video Adapter : 17 inches or above  
Audio Speaker : 64MB Memory or above  
: Stereo speaker  
Network Adapter : 10Base –T Ethernet Adapter  
Printer : 600dpi laser printer; A4 paper size  
Cdrom : 24X CD-ROM or above  
Other : 2 Serial Interface; 1 Parallel Interface; 1 USB2.0 port

### 2.Software Environments:

OS : Microsoft Windows Xp  
Display : 1024\*768, RGB24 or above  
Fonts : Normal fonts

## 2 、 Settings

- 1、 Disk Drive : format the disk where you are going to install CMS 3.0. (Recommended); At least 20GB free disk space.
- 2、 Desktop display setting : 1024\*768, 256 or more colors.
- 3、 Set TCP/IP protocol, IP : 202.114.4.119, mask : 255.255.255.0. As below:

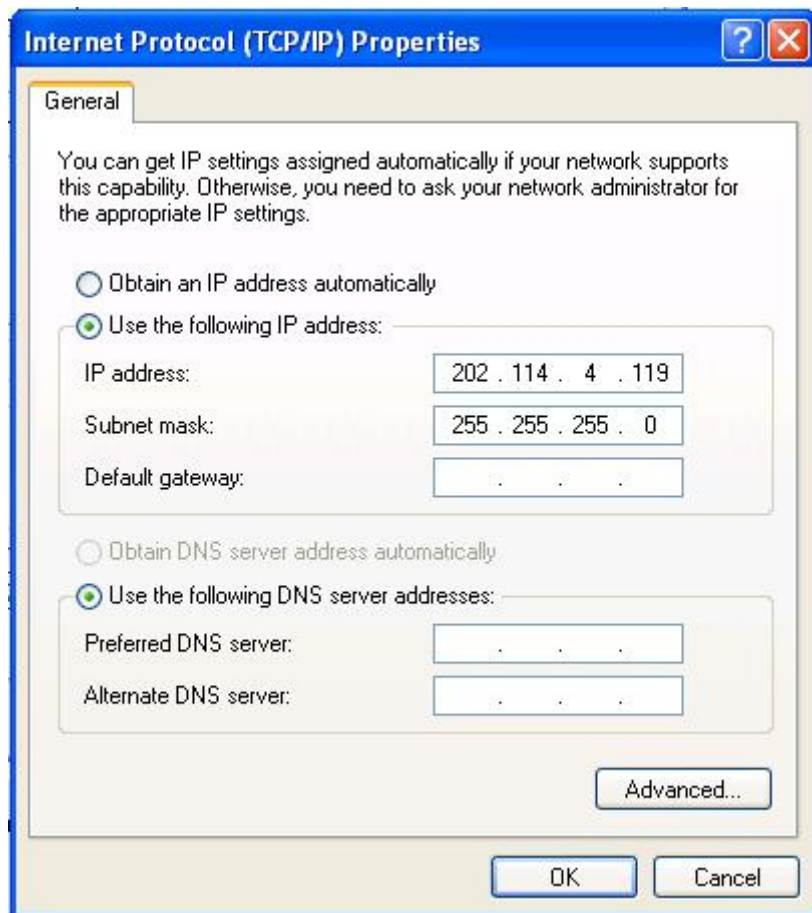


Figure 1 Set up Server IP address

Note : Set only the above two, leave the others blank.

### 3 、 CMS 3.0 Installation Process

1. Run CMSv3.0 Setup.exe, you will see the following screen,click next:

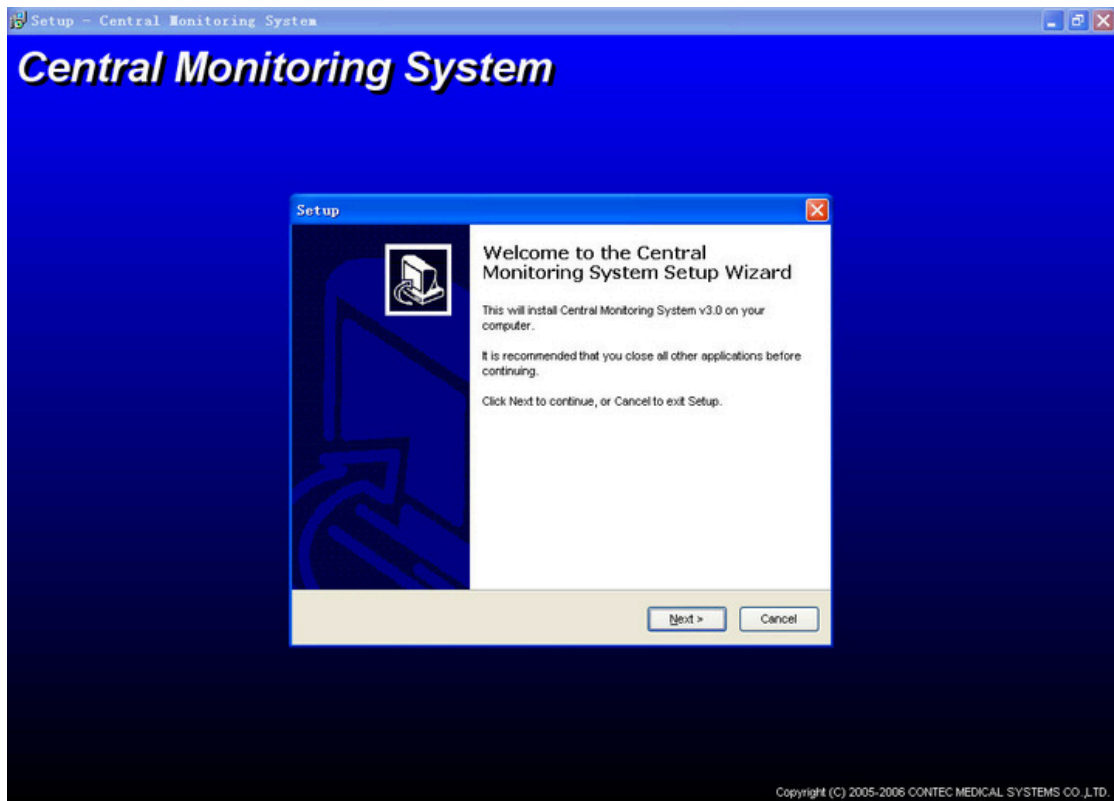


Figure 2 Installation wizard

2. Press next, and you will see Figure 3 ;
3. Select installation path: click "browse" button, select the destination path folder where you want CMS 3.0 to be installed. Note: The drive you selected must have at least 20GB free disk space. the default path is under the Program Files folder on C drive.

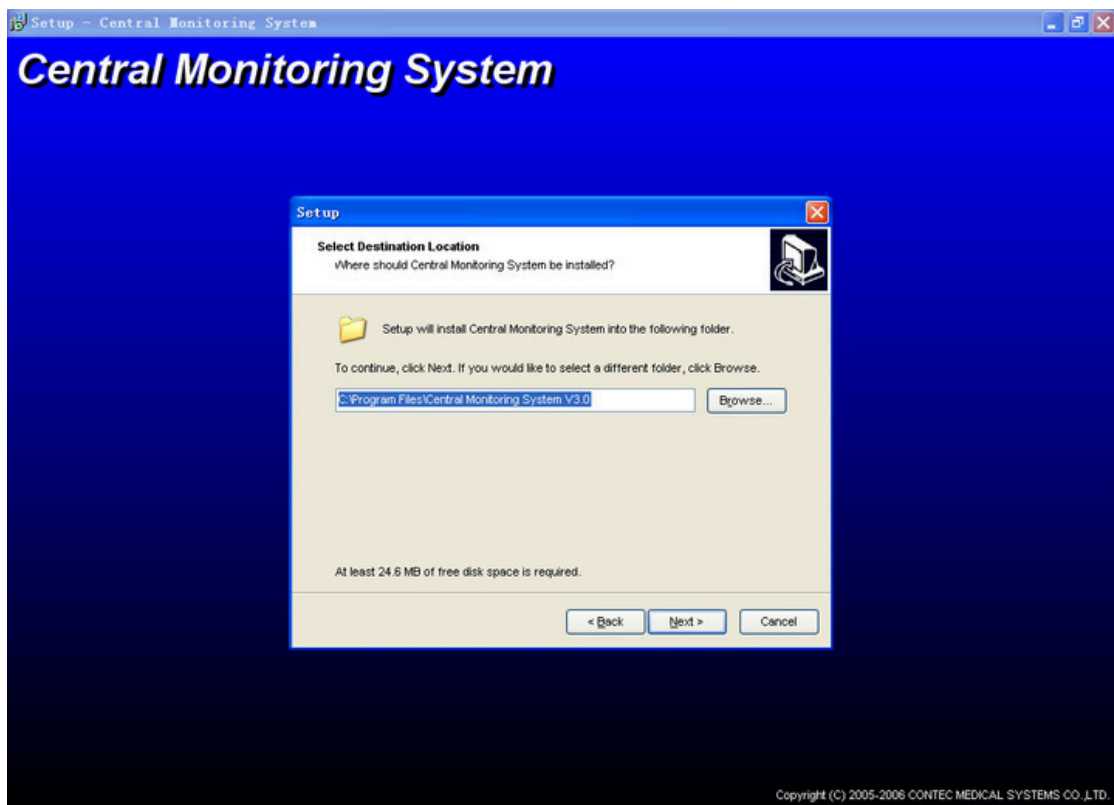


Figure 3 Select installation path

4. When you have selected the installation path, click next, and you will see Figure 4. It's recommended that you check all the check boxes.

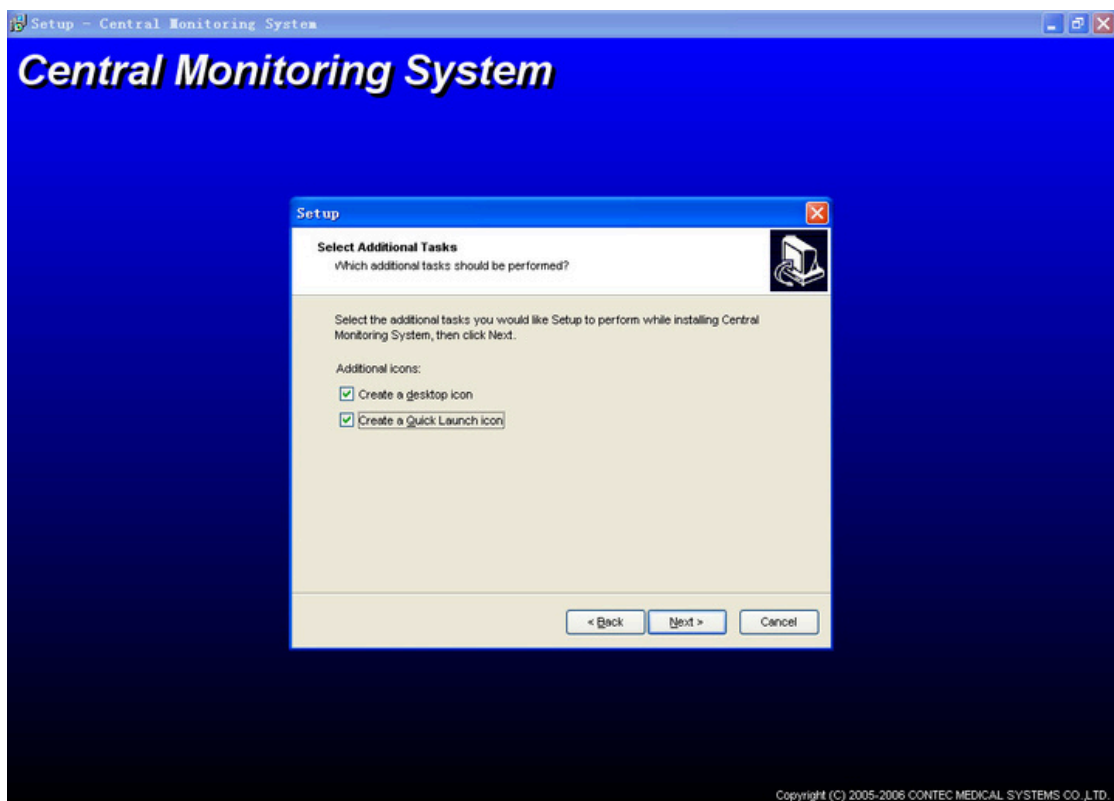


Figure 4 Select additional tasks

5. click next, and enter Figure 5 interface:

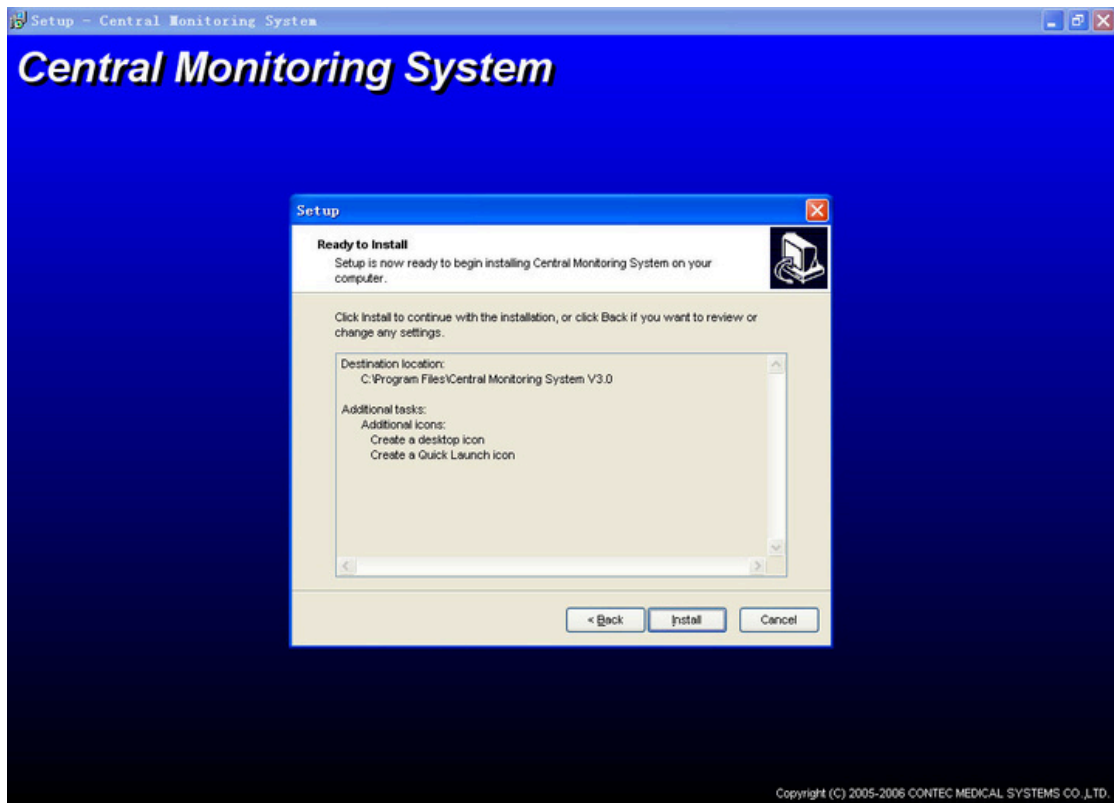


Figure 5 Installation interface

6. check if the items are all right, then click install. The files will be installed automatically. After seconds, Figure 7 will show up. Now do not click finish. Insert the USB key, and you will see Figure 6, select don't connect to the Internet, click next, choose the recommended auto installation. Choose continue on any screen until you the USB key installation is finished.

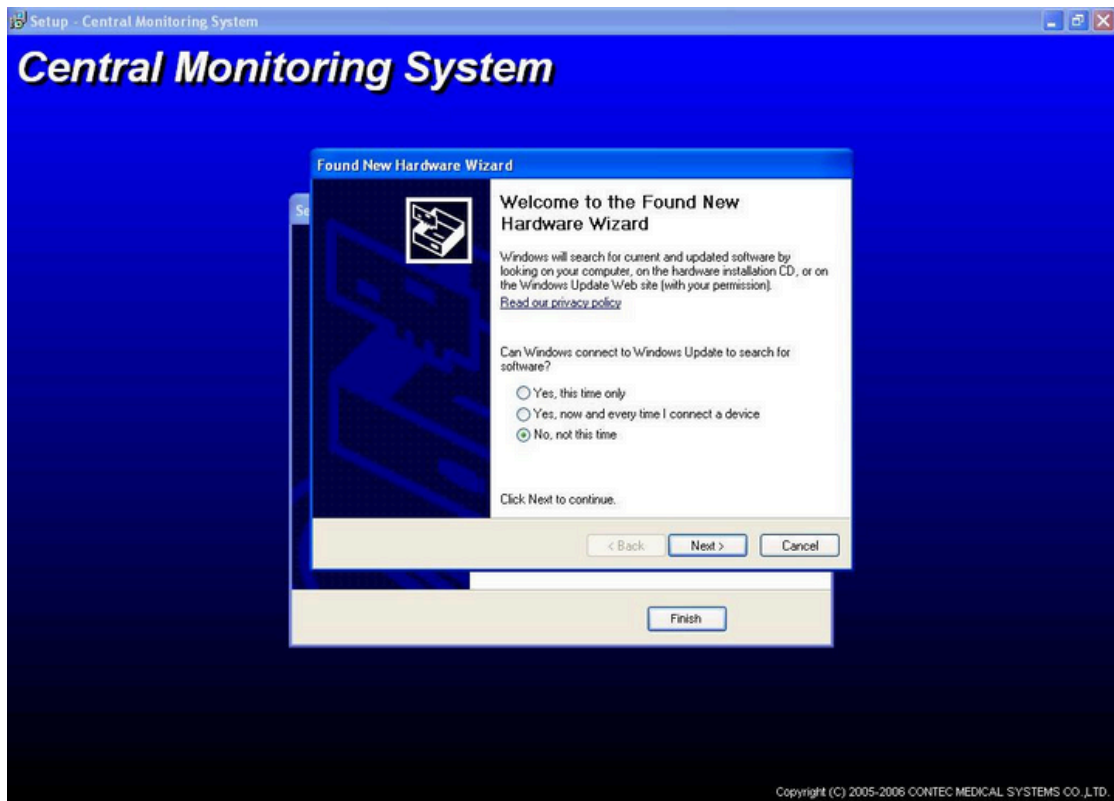


Figure 6 Install Micro Dog Driver

7. After the USB key is installed, you can choose whether to run CMS 3.0 when you click finish on Figure 7. If you need to configure the system, do not check the option. and the



installation program will simple quit. You can start CMS 3.0 from the desktop shortcut or the startmenu later. Now the installation is done.

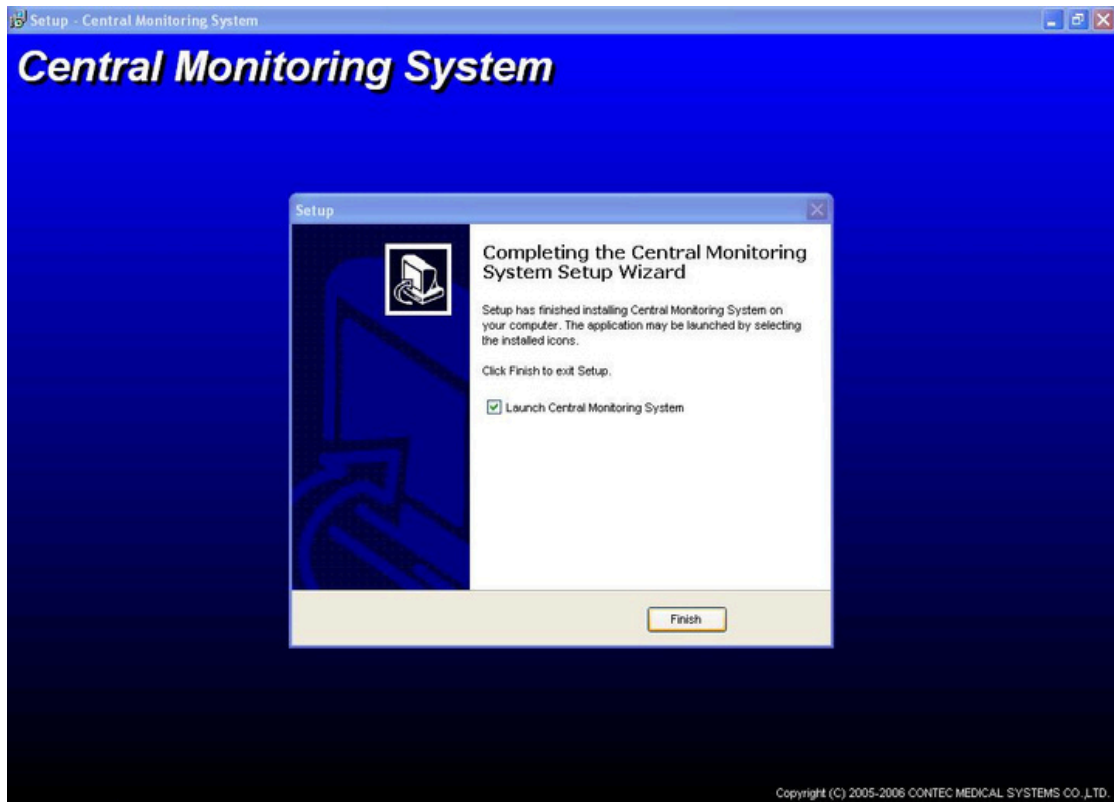


Figure 7 Finish

## 4 、 Adjusting System

It's recommended to adjust your system before you use CMS 3.0, to make sure it works better ,here are some recommended settings.

### 1. Set CMS Runtime parameters :

#### (1) change file property.

First , select all the files in the installation folder, then right click on any one of them, click property on the popup menu. Check the document property, uncheck the others.

#### (2) Open file "SysSetup.ini", it's in the installation folder.

#### (3) Check the following lines,

[MaintainSetup]

Language=1 (1 for English edition, 0 for Chinese Edition)

LockKeyboard=1

CloseNeedChkPsw=0

Destination=0

---

IsConnect=0  
Password=123456

2. Tune off CDROM Auto play (recommended):

Click windows "Start" → "Run", type "RegEdit.exe" and press "Enter" key.

Open: (1) "My computer" → "HKEY-LOCAL-MACHINE" → "SYSTEM" → "CurrentControlSet" → "Services" → "Cdrom". Find the "Autorun"key and set the value to 0x00000000.

(2) "My computer" → "HKEY-LOCAL-MACHINE" → "SYSTEM" → "ControlSet001" → "Services" → "Cdrom". Find the "Autorun"key and set the value to 0x00000000.

(3) "My computer" → "HKEY-LOCAL-MACHINE" → "SYSTEM" → "ControlSet002" → "Services" → "Cdrom". Find the "Autorun"key and set the value to 0x00000000.

3. Add CMS 3.0 to system startup group (Recommended) :

Right click on windows status bar. Select "explorer", double click "programs" → "startup", Right click on blank area, select "New" → "shortcut", press "browse" button, find the CMS executable file, press "Next" → "Finish".

Now reboot your computer, and CMS 3.0 will be ready.