



1NEED PROLINE
Product Line
and Work Protocol

CAMPOMATS
HUMAN
TECHNOLOGY

ALLNEED Meso ProLine products contain ultra-pure raw materials in high concentrations, with meticulously selected pharmaceutical grade formulations.

They are sterile, without additives and perfectly tolerable. The particular viscosity of the formulations is characteristic by the skin. Combined with the most advanced transdermal delivery systems, they guarantee patients the benefits of traditional mesotherapy with a non-invasive, painless treatment with immediate results.

of the high amount of **hyaluronic acid contained in it.**

Formula optimized for delivery with Campomats medical devices.

CMREBUILD

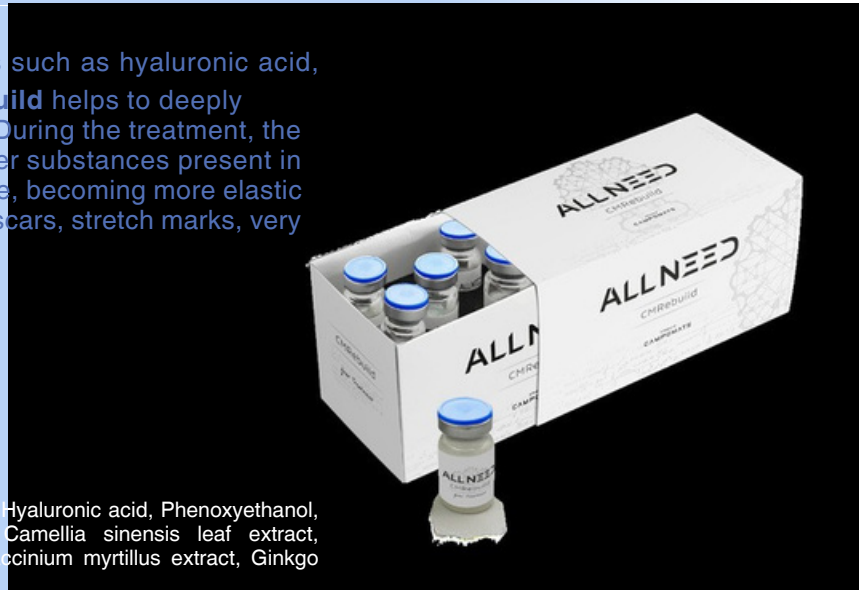
Box 5x5 ml

Thanks to the presence of bioactive substances such as hyaluronic acid, marine collagen and blackberry extract, **CMRebuild** helps to deeply stimulate the production of collagen and elastin. During the treatment, the conveyance and absorption of the same and other substances present in the formulation help the skin to rebuild and hydrate, becoming more elastic and toned. Particularly suitable for face and body scars, stretch marks, very damaged skin, deep wrinkles.

Functional substances:

- HYALURONIC ACID
- MARINE COLLAGEN
- BLACKBERRY

Ingredients: Water (aqua), Sodium chloride, Sodium hydroxide, Hyaluronic acid, Phenoxyethanol, Ethylhexylglycerin, Hydrolyzed collagen, Propylene glycol, Camellia sinensis leaf extract, Theophylline, Panthenol, Arbutin, Centella asiatica extract, Vaccinium myrtillus extract, Ginkgo biloba leaf extract.



CMREPAIR

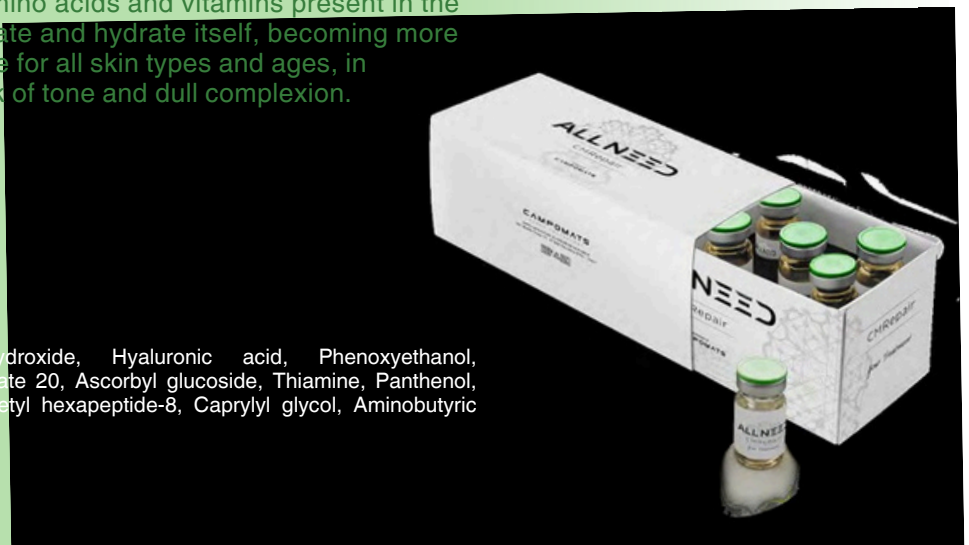
Box 5x5 ml

Thanks to the presence of bioactive substances such as hyaluronic acid, retinol and panthenol, **CMRepair** helps to deeply stimulate the production of collagen and elastin. During the treatment, the conveyance and absorption of the same and of the amino acids and vitamins present in the formulation, help the skin to regenerate and hydrate itself, becoming more elastic and toned. Particularly suitable for all skin types and ages, in presence of wrinkles, dark spots, lack of tone and dull complexion.

Functional substances:

- HYALURONIC ACID
- RETINOL
- PANTHENOL

Ingredients: Water (Aqua), Sodium hydroxide, Hyaluronic acid, Phenoxyethanol, Ethylhexylglycerin, Mannitol, Retinol, Polysorbate 20, Ascorbyl glucoside, Thiamine, Panthenol, Pyridoxine, Dimethylaminoethanol tartrate, Acetyl hexapeptide-8, Caprylyl glycol, Aminobutyric acid, Arginine, Lysine, Glycine, Proline.



CMVITAPEEL

Box 5x5 ml

Thanks to the presence of a particular mix of acids, **CMVitaPeel** assists a powerful exfoliating, rejuvenating and depigmenting action. During the peeling, the precious amino acids and vitamins penetrate into the epidermis with an elasticising and toning action. The application time depends on the type and condition of the skin and varies from a min of 3 to a max of 15 minutes. Do not use if the area to be treated has micro-wounds.

Functional substances:

- GLYCOLIC MIX
- LACTIC ACID
- TARTARIC ACID
- CITRIC ACID
- MANDELIC ACID
- AMINOACIDS
- VITAMIN B12

Ingredients: Glycolic Mix • Lactic acid • Tartaric acid • Citric acid • Mandelic acid
• Aminoacids • Vitamin B12



Before



After



ALLNEED
— MESOPROLINE —
Your Treatment

CAMPOMATS brings each customer on a new path, in order to develop a Microneedling, Micropricking and NanoPeel working protocol that meets the most modern requests for natural, organic and cosmeceutical products.

Thanks to the vetlhoep mestnutd yw oarkn,d Cianmtepnosem atrse seharsc h in anfadcthe unique feature of replacing the watery part of most developed unique formulations, focusing above all on theof the components with Organic Aloe Vera juice.

choice of ingredients. We have chosen not to include

fragrances in the formulations of our products forGiven the high concentration of this special ingredient, each professional use, with the aim of minimizing the risksproduct, in addition to its specific functions, has basic

of skin irritation and sensitization and to meet the professional line, moisturizing, soothing, calming and anti-aging properties.

tolerability requirements of even the most sensitiveLet's see in detail the products of the 1NEED PROLINE

1NEED PROLINE MOUSSE BALANCE

200ml Airless Packing

Delicate mousse, designed for cleaning facial skin before and after Micropricking, Microneedling, semi-permanent make-up and NanoPeel treatments. Rich in ingredients such as Aloe Vera and Propolis with a moisturizing, soothing and restorative action.

Functional substances:

• BIOLOGICAL ALOE VERA • PROPOLIS

Ingredients: Aloe Barbadensis Leaf Juice (*), Aqua, Glycerin, Chamomilla Recutita Flower Water (*), Prunus Amygdalus Dulcis Oil, Ethylhexyl Palmitate, Ethylhexyl Stearate, Propanediol, Cetearyl Glucoside, Tocopheryl Acetate, Bisabolol, Allantoin, Sodium Chloride, Mannitol, Sodium Citrate, Acetyl Tetrapeptide-15, Oryza Sativa Starch, Sodium Hyaluronate, Glycyrrhiza Glabra Extract, Melissa Officinalis Extract (*), Tocopherol, Ascorbyl Palmitate, Lecithin, Benzyl Alcohol, Xanthan Gum, Glyceryl.

1NEED PROLINE SANITAZING TOWELS

1 pc. 2 Pads

Disposable sanitizing pads enriched with functional substances such as organic Aloe Vera juice, saline solution, burdock extract, sage and green tea which perform a soothing and sanitizing action.

Functional substances:

• ORGANIC ALOE VERA • SALINE SOLUTION • CHLOREXIDINE • BURDOCK EXTRACT • ORGANIC GREEN THEA EXTRACT • SAGE EXTRACT

Ingredients: Aqua, Aloe Barbadensis Leaf Juice (*), Propanediol, Polyglyceryl- 4Caprate, Arctium Lappa Root Extract, Sodium Chloride, Chlorhexidine Digluconate, Camellia Sinensis Leaf Extract (*), Salvia Officinalis Leaf Extract, Benzyl Alcohol, Glycerin, Xanthan Gum, Ethylhexylglycerin, Potassium Sorbate, Sodium Benzoate.

1NEED PROLINE CALMING CREAM

200ml airless package

Soothing compress cream rich in a special peptide-15 which acts on hyper-reactive and sensitive skin, strongly increasing the level of tolerance of the skin which is less reactive. Effectively relieves the sensation of tingling, burning or redness of the skin.

Functional substances:

- BIOLOGICAL ALOE VERA • PEPTIDE-15

Ingredients: Aloe Barbadensis Leaf Juice, Aqua, Cetearyl Alcohol, Glycerin, Prunus Amygdalus Dulcis Oil, Oryza Sativa Bran Oil, Ethylhexyl Palmitate, Ethylhexyl Stearate, Propanediol, Stearic Acid, Cetearyl Glucoside, Tocopheryl Acetate, Mannitol, Bisabolol, Acetyl Tetrapeptide-15, Allantoin, Oryza Sativa Starch, Lecithin, Ethylhexylglycerin, Sodium Citrate, Tetrasodium Glutamate Diacetate, Tocopherol, Ascorbyl Palmitate, Citric Acid, Xanthan Gum, Benzyl Alcohol.



1NEED PROLINE BALANCING BIOMASK

Box 12 pcs.

Disposable mask in highly moisturizing, soothing and regenerating biocellulose. Thanks to the high concentration of organic aloe vera juice, peptide-15, bisabolol, licorice extract and hyaluronic acid it is ideal for restoring the skin after treatments.

Functional substances:

- BIOLOGICAL ALOE VERA
- PEPTIDE-15
- SALINE SOLUTION
- HYALURONIC ACID
- BISABOLOL
- LICORICE EXTRACT
- ORGANIC MELISSA EXTRACT

Ingredients: Aloe Barbadensis Leaf Juice (*), Aqua, Glycerin, Chamomilla Recutita Flower Water (*), Prunus Amygdalus Dulcis Oil, Ethylhexyl Palmitate, Ethylhexyl Stearate, Propanediol, Cetearyl Glucoside, Tocopheryl Acetate, Bisabolol, Allantoin, Sodium Chloride, Mannitol, Sodium Citrate, Acetyl Tetrapeptide-15, Oryza Sativa Starch, Sodium Hyaluronate, Glycyrrhiza Glabra Extract, Melissa Officinalis Extract (*), Tocopherol, Ascorbyl Palmitate, Lecithin, Benzyl Alcohol, Xanthan Gum, Glyceryl.



ORGANIC ALOE VERA (1st in all 1NEED PROLI cosmetics)

Aloe Vera belongs to the Liliaceae family and is a perennial herb native to Africa that subsequently developed in other parts of the world. The gel obtained from the leaves of the Organic Aloe Vera plant boasts numerous cosmetic properties as thanks to the content of vitamins, minerals and substances that stimulate the immune system, it has a moisturizing action, stimulates skin repair, calms any redness and irritation, has an effect tensor and anti-aging, it helps to combat dark spots by delaying their appearance and, thanks to its antibacterial properties, it also has a purifying action. In addition, Organic Aloe Vera creates a film on the surface of the skin that can protect it from atmospheric agents and external aggressions.

GREEN TEA Green Tea (Camelia Sinensis) belongs to the

Theaceae

family and is native to Southeast Asia with white flowers and shiny green leaves. Rich in important micronutrients, such as flavonoids, tannins, catechins, B vitamins, minerals and amino acids, it boasts antioxidant, astringent and detoxifying properties. The Green Tea, therefore, helps eliminate toxins from the skin, narrowing the dilated pores that tend to become infected by bacteria, therefore indicated for the treatment of acne. Improves elasticity and hydration of the skin, making it healthy, radiant, with a uniform complexion.

IALU FILLER COMPLEX Ialu Filler Complex is a functional

substance that contains

cross-linked Hyaluronic Acid capable of ensuring long-term hydration, thanks to its hygroscopic power. Due to their ability to retain water, the Hyaluronic Acid particles restore high water levels of the tissues, with a consequent plumping effect. Hyaluronic acid is a disaccharide already present in all human connective tissues, including the skin. This molecule is essential for the formation of the collagen matrix and elastic fibers and for maintaining skin hydration. The alterations of hyaluronic acid inside the skin contribute, over time, to skin aging. Hyaluronic acid helps stimulate collagen repair and being a substance naturally produced by the body, the skin is able to absorb it very easily, making it softer and more elastic with a topical filler effect.

OMEGA COMPLEX

Omega Complex is a revolutionary lipid complex that contains a blend of amino acids, capable of increasing cellular metabolism and protecting the skin from free

radicals thanks to its powerful antioxidant action. It not only regenerates and protects the skin, but also increases hydration and maintains the skin's water balance, neutralizing environmental damage rejuvenating tired and damaged cells. The skin is smooth and firmed.

WILLOWHERB COMPLEX

Willowherb Complex is a functional substance extracted from Epilobium Angustifolium, a typical herb of the North American willow. Since always, peoples of the forest regions of Canada have used this plant as a soothing, cleansing and healing agent for the treatment of minor burns, rashes, ulcers and numerous other irritations and skin conditions. Contemporary science has discovered that Canadian Willowherb Complex contains a patented bioactive molecule with a powerful and broad ability to counteract the hyper-reactivity of the skin, calming any redness or irritation and also protecting the most sensitive or environmentally damaged skins.

COENZYME Q10

Coenzyme Q10 (also known as Ubiquinone) is a very important molecule for our body. In fact, coenzyme Q10 is present in all the cells of our body, as it is involved in many processes essential for cells survival. This molecule is capable of exerting a marked antioxidant activity that protects cells from damage caused by oxidative stress done by free radicals. Free radicals are highly reactive chemical species that are capable of damaging skin cells, profoundly altering their structure and therefore their function. Not surprisingly, free radicals and the oxidative stress they generate are among the main causes of skin aging and the appearance of imperfections over time, such as wrinkles and skin spots. Coenzyme Q10 acts both by supporting the antioxidant defenses present within our body, and by preventing and directly countering the action of free radicals. In this way, coenzyme Q10 protects skin cells and, in particular, fibroblasts from damage by these dangerous chemical species.

PEONIA COMPLEX Peony Complex is a functional

substance obtained from

the root of Paeonia lactiflora, the Peony. Elegant and luxuriant complex, it is considered the Queen of flowers. Symbol of peace, love, prosperity and nobility of mind, this plant, of Chinese origin, is endowed with important beneficial properties. The term peony, in fact, seems to derive from the Greek and means "healthy" thanks to the fact that the roots of the plant, since ancient times, were used as effective anti-inflammatory, antioxidant and protective of the cardiovascular system. From the roots of Peony a molecule with strong anti-aging and

antioxidant properties is obtained: peoniflorin. Peoniflorin acts according to a mitochondrial autophagy mechanism. This phenomenon was discovered by the Japanese biologist Yoshinori Ohsumi who in 2016, thanks to this precious discovery, was awarded the Nobel Prize for medicine. Mitochondria are cellular organs in charge of producing energy (ATP) and supplying it to the whole body. Over time this mechanism loses efficiency and the mitochondria, producing less energy, begin to synthesize free radicals. Free radicals are molecules responsible for oxidative stress and therefore for premature skin aging. Mitochondrial autophagy consists in recognizing damaged cellular components, "self-digesting" and replacing them. Peony Complex is effective as it stimulates autophagy, the natural process of eliminating mitochondria that are no longer functioning, thus reducing the signs of aging. As a result, no free radicals will be synthesized and the skin will remain firm and elastic. It also increases collagen synthesis and stimulates the production of dermal cells, therefore the skin is more compact, elastic and wrinkles reduced.

PEPTIDE-15

Peptide-15 is a functional substance capable of acting on hyper-reactive and sensitive skin. The goal is to decrease the release of pro-inflammatory mediators and increase the tolerance level of the skin, reducing any sensations such as tingling, burning or redness of the skin. The effect of Peptide-15 is similar to that of natural opiates. They act on nerve endings by inhibiting their activity. This reduces the feeling of discomfort resulting from factors that cause skin sensitivity. Therefore, the tolerance level increases, the skin is less reactive and the sensations of discomfort are reduced.

BISABOLOL

Bisabolol is a natural element presents in various plant species, including Chamomile and the Candeia tree, with an important soothing and healing power. It is one of the soothing active ingredients for excellence, ideal for sensitive, irritated or damaged skin because it acts in a complete and balanced way with a powerful anti-inflammatory, healing, repairing, antibacterial and antifungal action. Furthermore, it is able to disinfect oily and impure skin and make dry and flaky skin younger and more luminous.

LEMON BALM

Lemon balm is an excellent remedy for sensitive and red skin and to combat wrinkles. It boasts soothing and decongestant properties thanks to the high content of rosmarinic acid, capable of calming any itching, burning and accelerating the physiological restoration of skin lesions, even those left by acne. Lemon balm also

contains phenols that perform an antioxidant and anti-aging action, protecting the skin from free radical damage and slowing the skin aging process.

LICORICE Licorice is a plant belonging to the

Leguminosae family, from whose root a sweet juice is extracted. Its soothing properties and its ability to promote the repairing processes of the epidermis in cases of irritation and acne are now known. Licorice extract also acts as a depigmenting agent, being effective in counteracting skin hyper-pigmentation.

BURDOCK Burdock is a large biennial herb from Europe

and Asia, naturalized in North America and Argentina, which grows almost everywhere, especially in uncultivated places and among ruins. Its scientific name is *Arctium Lappa* and in Italy it is widespread everywhere, including the islands. Burdock contains lappin, inulin, tannic acid and mucilaginous substances and is considered one of the most important purifying plants not only for our tradition but also for Chinese medicine. It has always been known as a dermatopathic plant, finding a great use to counteract various skin irritations.

CHLORHEXIDINE Chlorhexidine is a skin disinfectant

with long-term bactericidal action. Its molecular structure has a high affinity with epidermal proteins which leads to rapid and persistent absorption in the skin. Therefore, it allows to sanitize the skin quickly and effectively without wasting time and without irritating.

GLYCOLIC ACID

Glycolic acid is the smallest molecule in the AHA family; it is used for a skin renewal action. Naturally found in vegetables, fruit such as sour grapes, cane and sugar beets. Thanks to its low molecular weight and small size, Glycolic Acid is able to position itself between the corneocytes of the stratum corneum and to bind water molecules, thanks to the hydroxyl function (-OH), leading to a plumping of the stratum corneum. The skin is smoother and better in terms of elasticity, hydration and softness. In addition, it performs an exfoliating action, resulting in an acceleration of cell regeneration processes, an immediate lightening effect and an increase in the activity of fibroblasts and the production of Collagen and Elastin with the rapidly visible result of younger looking skin.

Sage can be used directly on non-intact skin, as it disinfects and supplies the skin with significant amounts of Vitamin C, an essential precursor of collagen that forms the structural fibers of the epidermis and dermis. The terpenes present in the sage have strong anti-inflammatory properties being able to inhibit the production of some inflammatory mediators. This effect makes its use particularly effective in relieving any redness.

MALIC ACID

Malic acid is an alpha-hydroxy acid characteristic of fruit, particularly abundant in apples and strawberries. It boasts well-known exfoliating properties and a good moisturizing effect can also be appreciated, especially if inserted in formulations already containing Glycolic Acid with which it works in synergy.

TARTARIC ACID Tartaric acid is particularly abundant in

grapes and tamarind, but also in bananas and citrus fruits. Due to the greater molecular weight, which results in a more gradual skin absorption, its exfoliating action can be considered more superficial and less irritating than other more aggressive alpha-hydroxy acids, such as glycolic acid, but for this very reason complementary.

AHA-MANDELIC ACID Mandelic acid belongs to the family

of alpha hydroxy acids and is a derivative of bitter almond extract. One of the most evident properties is its depigmenting action, as it inhibits the production of melanin, making it effective for treating blemishes and for even skin tone. Given the heavier molecular structure, Mandelic Acid is absorbed more slowly by the skin making it suitable for sensitive skin, including those affected by couperose, as it avoids skin irritation.

SALICIDIC ACID Salicylic acid is the main exponent of beta

hydroxy acids, which are exfoliating and keratolic agents with an action different from that of alpha-hydroxy acids. The molecule is obtained from the enzymatic hydrolysis of salicin, a salicoside glucoside extracted from the bark of the Willow plant (*Salix Alba*). Applied to the skin, it acts as a powerful keratolytic: the molecule is able to selectively break the keratin protein chain. Having no effect on other proteins, Salicylic Acid is able to exfoliate only the cells of the stratum corneum, eliminating the keratin "plug" that obstructs the blackhead, dissolving the deposits that dilate the pores, thus reducing the possibility of formation of acne lesion. Note: in subjects allergic to aspirin

(acetylsalicylic acid) it is advisable to perform a preventive test on the forearm before applying BHA to the face.

PHA-LACTOBIONIC ACID Lactobionic acid is chemically

made up of Gluconic acid, a polyhydroxy acid, and a sugar molecule, Galactose. It has a strong long-term hygroscopic and moisturizing power due to the presence of 8 hydroxyl groups capable of binding with water. Promotes cell renewal by modulating the keratinization process. It has a remarkable antioxidant, reparative and healing action, typical of galactose, a sugar that plays a key role in the synthesis and aggregation of collagen and in cell migration phenomena. The skin is radiant and the complexion uniform.

INSTITUTE PROTOCOL FOR MICROPRICKING (Cartridge 9MP 0.18)

Cabin Preparation

Apply the transparent film to the entire workbench, equipment and handpiece holder.

- Place the Towel on the support surface
- Protect the handpiece and cable with the special disposable plastic protection.
- Prepare all **1NEED PROLINE** products needed to carry out the treatment.
- Wear nitrile gloves, mask and washcloth.

Working Protocol

- **1NEED PROLINE MOUSSE BALANCE.** Cleanse the face to prepare the skin for the Micropricking treatment. Rinse thoroughly. If necessary, repeat the cleansing.

- Blot and dry with Kleenex.

- Put the nitrile gloves on both hands.

- **1NEED PROLINE SANITAZING TOWELS.** Pass the sanitizing discs over the entire area to be treated.

- **1NEED PROLINE CALMING FORMULA.** Apply generously all over the face, creating thickness.

Leave on for 20-30 minutes. Remove any residue with dry Kleenex.

- Proceed with the **Micropricking** technique *.

- **1NEED PROLINE SANITAZING TOWELS.** Pass the sanitizing discs (smooth side) over the entire treated area.

- **1KNIEeeEnDe xP.R WOaLitl NaE fe BwA sLeAcoNnCdlSbGe BfoIrOe MprAoSceKe. dLienagv teo othne f onre 1xt0 s-1te5p**

* MICROPRICKING TECHNIQUE

1. Start from the chin area and continue working in the direction of the masseter, then the lip and finally over the entire cheek area up to the temporal area. In this area, keep the frequency at **150** with **OMNIA** device or **speed 5** or **6** with the **1NEED** handpiece and carry out the work from the center of the face outwards with circular movements, remembering that the handpiece must always be well perpendicular to the skin. Carry out a first test using the cartridge positioned on the **0.15mm level** of the handpiece, then if the skin and sensitivity of the person allow it, proceed with the cartridge positioned on the **0.3mm level**. Perform on the same area from **3** to **5** steps in the same manual.

2. Proceed with the treatment, always making circular movements on the orbicular area of the eye and on the forehead, setting the frequency to **110** on the **OMNIA** machine, **speed 4** on the **1NEED** handpiece. Remember that in these areas the positioning of the cartridge is always one level less than that used in the other areas (for example, if you used the cartridge positioned on the **0.3mm level** on the chin and cheeks, it will be positioned on **0.15mm** for the forehead and orbicular eyes). Pay close attention as they are particularly sensitive areas and the skin tends to be thinner. Perform **2** to **4** steps. Proceed with the same technique on the neck and décolleté.

3. End with the treatment by carrying out specific manual actions on individual wrinkles. Proceed linearly in the direction of the wrinkle from the inside to the outside of the face. Depending on the area where the wrinkle is located, keep the cartridge on the level previously used for circular movements. Perform **1** to **2** steps on the single wrinkle.

4. Specific lips: Set the frequency to **110** on **OMNIA** device, **speed 4** to **1NEED** and place the cartridge on the level used for the cheek area. Make circular movements on the curb of the upper and lower lip. Subsequently, proceed linearly in the direction of the curb from the center of the lip (upper and lower) outwards.

5. Specific nose: Use the same method used to treat single wrinkles, but in the opposite direction. Then proceed from the outside of the face towards the tip of the nose.

Course of Treatments It takes from 4 to 6 treatments, 1 every 15 days. Results are cumulative and become noticeable after the first month.

The specific active ingredients are applied to the skin to further promote the formation of Collagen and the correction of various imperfections. Already after a few hours, the slight redness caused by the treatment subsides and the client is able to immediately return to his normal life. In the space of a few weeks, you will notice that your skin takes on greater tone, with an excellent result even on wrinkles that are particularly difficult to treat such as peribuccal ones. The treatment is contraindicated in subjects with a tendency to form keloids or with active acne.

Between one treatment and another you can combine other types of treatments such as NanoPeel, radiofrequency or other.

INSTITUTE PROTOCOL FOR MICRONEEDLING (Cartridge 9MN 0.18)

Cabin Preparation

Apply the transparent film on the entire workbench, equipment and handpiece support.

- Place the Towel on the support surface.
- Protect the handpiece and cable with the special disposable plastic protection.
- Prepare all **1NEED PROLINE** products needed to carry out the treatment.
- Wear nitrile gloves, mask and washcloth.

Working Protocol

- **1NEED PROLINE MOUSSE BALANCE.** Cleanse the face to prepare the skin for the Microneedling treatment. Rinse thoroughly. If necessary, repeat the cleansing.
- Blot and dry with Kleenex.
- Put the nitrile gloves on both hands.
- **1NEED PROLINE SANITAZING TOWELS.** Pass the sanitizing discs over the entire area to be treated.
- **1NEED PROLINE CALMING FORMULA.** Apply generously all over the face, creating thickness. Leave on for 20-30 minutes. Remove any residue with dry Kleenex.
- According to the type of advanced treatment desired, select the medical substance to be conveyed according to the problem to be treated. Microneedling can in fact be used to tone and rejuvenate skin tone and deep wrinkles, treat acne and keloid scars, stimulation and activation of collagen, stimulation of the scalp for hair regrowth, anti-cellulite treatments and anti-stretch mark treatments.
The products used must be medical and injectable.
- Proceed with the **Microneedling technique ***.
- **1NEED PROLINE SANITAZING TOWELS.** Pass the sanitizing discs (smooth side) over the entire treated area.
- **1NEED PROLINE BALANCING BIOMASK.** Leave on for 10-15 minutes, then remove and eventually dab with Kleenex. Wait a few seconds before proceeding to the next step.

* MICRONEEDLING TECHNIQUE

1. Divide the facial area into 6 parts, 1 forehead, 2 periocular areas, 3 nose area, 4 lips, 5 chin and 6 cheeks. Always treat one area at a time. Maintain the frequency at **150/160** with **OMNIA** device and **speed 6** with **1NEED** and carry out the working procedure, remembering that the handpiece must always be well perpendicular to the skin. Manuality must be done by always creating four lines and directions, vertical, horizontal, right diagonal and left diagonal. All the steps must be repeated in one direction and the other. Carry out a first test using the cartridge positioned on the depth level lower than the desired working depth of the handpiece, then if the skin and the sensitivity of the person allow it, proceed with the cartridge positioned on the maximum desired level.
2. Proceed with the treatment, carrying out the same movements on the orbicular area of the eye and on the forehead, setting the frequency at a lower level than that used on the 6 cheek area. Remember that in these areas the positioning of the cartridge is always one level less to that used in the other areas (for example, if you use the cartridge positioned at the **1.5mm** level on the chin and cheeks, it will be positioned on **0.75mm** or **1mm** for the forehead and orbicular eyes). Pay close attention as they are particularly sensitive areas and the skin tends to be thinner. Proceed with the same technique on the neck and décolleté. Remember that the correct working depth is the one that allows you to see the release of small dots of blood that correspond to the breakage of the fibroblasts. No pin blood, means you are working too superficially.
3. End with the treatment by carrying out specific manual skills on individual wrinkles or scars or stretch marks. With the “stamp” technique, working on the entire extent of the scar or deep wrinkle. Proceed linearly in the direction of the wrinkle from the inside to the outside of the face. Depending on the area where the blemish is located, keep the cartridge vertical and work to “stamp” on the specific blemish.

Course of Treatments It takes from 4 to 6 treatments for the activation of collagen and the attenuation of deep wrinkles, up to 12 treatments in cases of severe keloids and deep scars at least 30 days apart. The results are cumulative and become evident after the first 3-4 treatments. After 24 or 48 hours, the redness caused by the treatment fades and the customer is able to return to his normal life, as long as he applies specific cosmetics and active ingredients for home use containing sunscreens for the following month.

INSTITUTE PROTOCOL FOR NANOPEEL TREATMENT (130AN Cartridge)

Cabin Preparation

Apply the transparent film to the entire workbench, equipment and handpiece holder.

- Place the Towel on the support surface.
- Protect the handpiece and cable with the special disposable plastic protection.
- Prepare all **1NEED PROLINE** products needed to carry out the treatment.
- Wear nitrile gloves, mask and washcloth.

Working Protocol

- **1NEED PROLINE MOUSSE BALANCE** Cleanse the face to prepare the skin for the NanoPeel treatment. Rinse thoroughly. If necessary, repeat the cleansing.
- Blot and dry with Kleenex.
- Put the nitrile gloves on both hands.
- **1NEED PROLINE SANITIZING TOWELS.** Pass the sanitizing discs over the entire area to be treated.
- Proceed with the Scrub NanoPeel Treatment * technique.
- Proceed with the NanoPeel Treatment ** Peeling technique for 10-15 minutes, taking care to divide the facial area into four parts, right and left, top and bottom.

- Remove thoroughly with warm water.
- **1NEED PROLINE MOUSSE BALANCE.** Apply to the face and massage gently for a few minutes, then remove with Kleenex.
- **1NEED PROLINE SANITAZING TOWELS.** Pass the sanitizing discs over the entire treated area.
- **1NEED PROLINE BALANCING BIOMASK.** Leave on for 10-15 minutes, then remove and eventually dab with Kleenex. Use any residue for a moisturizing massage.

Course of Treatments

The treatment can be carried out once a week or alternated with the treatment of Microneedling or Micropricking, especially in case of skin discoloration.

Tips

It is advisable to carry out the NanoPeel treatment as the first appointment of any other path to prepare the skin to receive the functional substances that will be applied later.

* NANOPEEL TREATMENT SCRUB TECHNIQUE

1. Use the **130AN** cartridge positioned on the **0.75** level of the handpiece. With clean and dry skin, start from the chin area and continue climbing in the direction of the masseter, then the lip and finally over the entire cheek area up to the temporal area. In this area, keep the frequency at **150** with **OMNIA** device and at **speed 5** or **6** on **1NEED** handpiece and carry out the working procedure from the center of the face outwards with linear and grid movements, such as drawing an asterisk. Perform on the same area from **3** to **5** steps in the same manual.
2. Proceed with the treatment, always carrying out linear and grid movements on the orbicular area of the eye and on the forehead, setting the frequency to **110** on **OMNIA**, **3** or **4** on **1NEED**, keeping the positioning of the **130AN** cartridge always at the same level. Pay close attention as they are particularly sensitive areas and the skin tends to be more delicate. Perform **2** to **4** steps. Proceed with the same technique on the neck and décolleté.
3. Specific nose: Set the frequency to **110** on **OMNIA** or **speed 4** on **1NEED** and proceed linearly with specific movements towards the tip of the nose, then from the outside of the face towards the tip of the nose. Perform **2** to **4** steps.

** NANOPEEL TREATMENT PEELING TECHNIQUE

1. Use the **130AN** cartridge positioned on the **0.75** level of the handpiece. Start from the chin area and continue in the direction of the masseter, then the labial and finally over the entire cheek area up to the temporal area. In this area, keep the frequency at **150** on **OMNIA** and **5/6** on **1NEED** and carry out the working procedure from the center of the face outwards with circular movements, remembering that the handpiece must always be well perpendicular to the skin. Perform on the same area from **3** to **5** steps in the same manual.
3. Proceed with the treatment, always making circular movements on the orbicular area of the eye and on the forehead, setting the frequency to **110** on **OMNIA**, **3** or **4** on **1NEED**, keeping the positioning of the **130AN** cartridge always at the same level. Pay close attention as they are particularly sensitive areas and the skin tends to be more delicate. Perform **2** to **4** steps. Proceed with the same technique on the neck and décolleté.
4. **Specific nose:** Set the frequency to **110** on **OMNIA**, **3** or **4** on **1NEED** and linearly proceed by carrying out specific manual skills towards the nose's tip, then from outside of the face towards the nose's tip. Perform from **2** to **4** steps.

CAMPOMATS Srl

Via Monte Rosa 11, 47838 Riccione (RN) ITALY
www.campomats.it • info@campomats.it • Ph. +39.0541.317141

