

Invented for life



**BOSCH**

# PCR Test for methicillin-resistant *Staphylococcus aureus*

✓ivalytic from Bosch –

The universal diagnostic platform.

Universal, intuitive, fast.



✓ivalytic

# PCR Test for methicillin-resistant *Staphylococcus aureus*

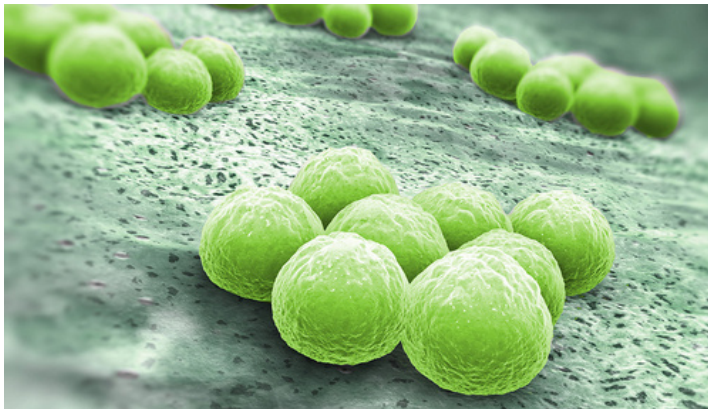
Methicillin-resistant *Staphylococcus aureus* – commonly known as MRSA – is a major multi-resistant, nosocomial pathogen worldwide. According to the WHO, patients infected with MRSA are about 50% more likely to die than those infected with non-resistant strains.<sup>1</sup>

Not only mortality, but also length of hospitalization, morbidity, and costs are increased significantly if MRSA infections are left untreated.<sup>2</sup>

However, MRSA is not the only pathogen in the genus *Staphylococcus* to cause problems. The majority of

*S. aureus* isolates, in Europe 83%<sup>3</sup>, belong to the group of methicillin-sensitive *Staphylococcus aureus* (MSSA) bacteria. *Staphylococcus aureus* is the most common pathogen associated with surgical site infections and the second most common source of healthcare-associated infections in the United States.<sup>4</sup>

By using one single cartridge, the Vivalytic MRSA/SA test differentiates between MRSA and MSSA in a timely manner so that appropriate antibiotic treatment can be administered.



## Sample material

Nasal or oropharyngeal swab sample

## Volume

600 µl

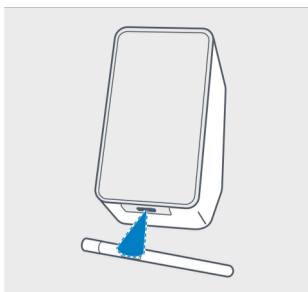
## Detection method

Real-time PCR test

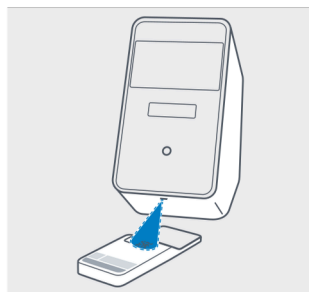
## Detectable pathogens

- Methicillin-resistant *Staphylococcus aureus* (MRSA)
- Methicillin-sensitive *Staphylococcus aureus* (MSSA)

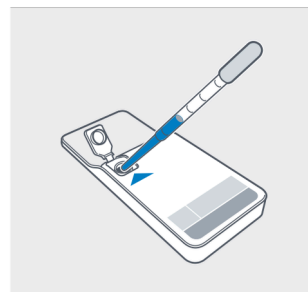
Vivalytic workflow: Good results can be this easy.



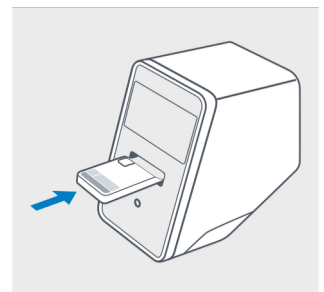
1 Scan sample code.



2 Scan cartridge code.



3 Insert the sample and close cartridge lid.



4 Insert cartridge. The test starts automatically.

Our biocontent cooperation partner is:



Subject to technical modifications. Printed in Germany. Any colour deviations are due to restrictions in the printing process. Printed on 100% chlorine-free bleached cellulose, produced in an environmentally friendly process. Not all products are available in all regions. Ask your local sales representative for availability in specific markets. For in vitro diagnostic use only.

Bosch Healthcare Solutions GmbH  
Stuttgarter Str. 130, 71332 Waiblingen, Germany

<sup>1</sup> WHO brochure on infection prevention 2016    <sup>2</sup> GLASS report 2014 p. 20 – 22, 37 – 40, 175 – 176

<sup>3</sup> ECDC report on AMR in 2018

<sup>4</sup> CDC statistics on HAI 2011-2014

The availability of the tests can differ regionally.

[www.bosch-vivalytic.com](http://www.bosch-vivalytic.com)

Art. No.: MDQ-01.733-01-LoC-013\_Rev2.0