

# noBook~s







# Small Outside

lbs (with battery)  
 compact  
 > 30cm  
 observation < 2mm  
 detection < 2cm/s  
 detection > 40m/s

length)

min

can be saved in less  
 between different modes & measurements

Applications: Cardiovascular, Radiology, Internal  
 Medicine, General Imaging, Vascular, Intensive  
 Care, MSK, ICU  
 Types of probes  
 2-18 MHz frequency range  
 High density probe  
 (available)  
 Size (10 thousands of images and videos)



Multipurpose suitcase: either as your backpack, or as carrying case.



SonoDocking  
 • (OVI-1, Foot-Switch, Video-Out, remote, 5-Video)



Anti-theft lock ②

Accessory basket ③

Printer socket ④

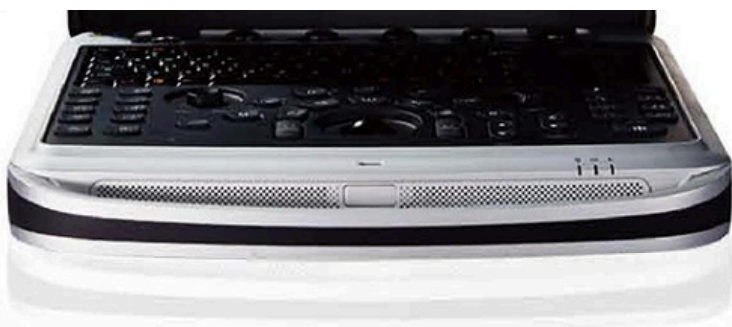


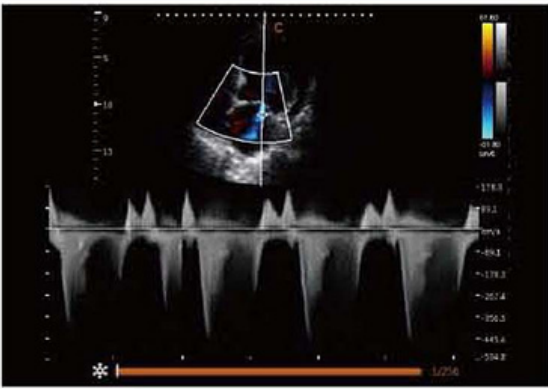
• SonoT, Multiple Coaxial, [SI\_]-----

Pneumatic height adjustment



Small footprint ⑦





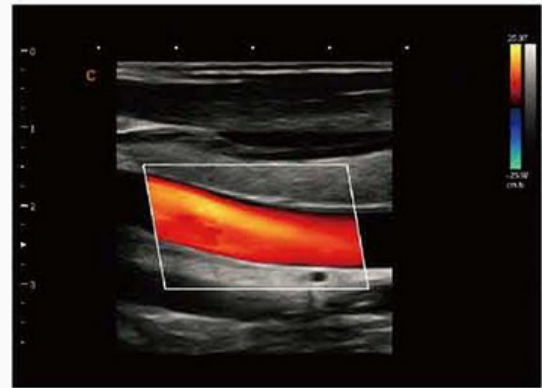
Mitral Valve Regurgitation,CW Mode



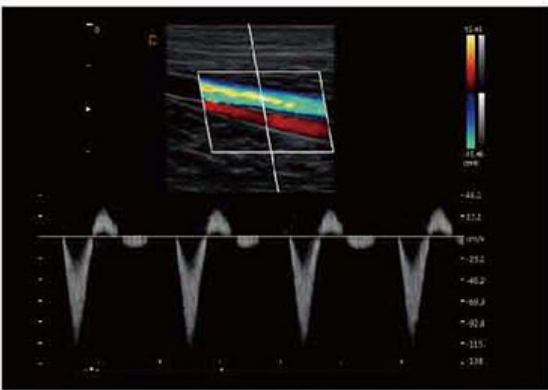
Short axis of mitral valve, B/BC Mode



MSK, B Mode



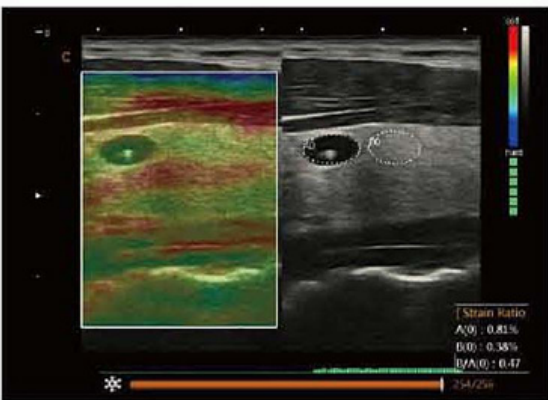
Carotid, C Mode



Vessel, PW mode



Gallstone,Zoom Mode



Thyroid nodule, Elastography



Auto-trace follicle measurement



2.0MHz-6.8MHz  
Convex  
C3-V



4.0MHz-15.0MHz  
Linear  
L7-V



7.0MHz-18.0MHz  
(With FHI) Linear  
L12-V



4.0MHz-15.0MHz  
Linear  
L8M-V



5.0MHz-14.0MHz  
linear  
LSMS-V



4.0MHz-15.0MHz  
Linear  
L75VA-V



1.5MHz-5.3MHz  
Phased array  
P2-V



2.0MHz-8.0MHz  
Phased array  
PS-V



4.0MHz-12.0MHz  
Transvaginal  
E6-V



4.0MHz-15.0MHz  
Transvaginal  
E7W-V



4.0MHz-15.0MHz  
Trans-Rectal  
R7-V



2.0MHz-6.5MHz  
Micro-Convex  
MC3-V



4.0MHz-12.0MHz  
Micro-Convex  
MC6-V

## CHISON Medical Technologies Co., Ltd.

Sales & Service Contact Address:

No.9, Xinhuihuan Road, Xinwu District, Wuxi, Jiangsu, China 214028

TE L : 0086-510-85310593 / 85310937

FA X : 0086-510-85310726

EMAIL : export@chison.com.cn

We reserve the right to make change, 10 th,s catalogue without prior notice  
Please contact our local dealer for the latest information.

SonoBook 8-20180415